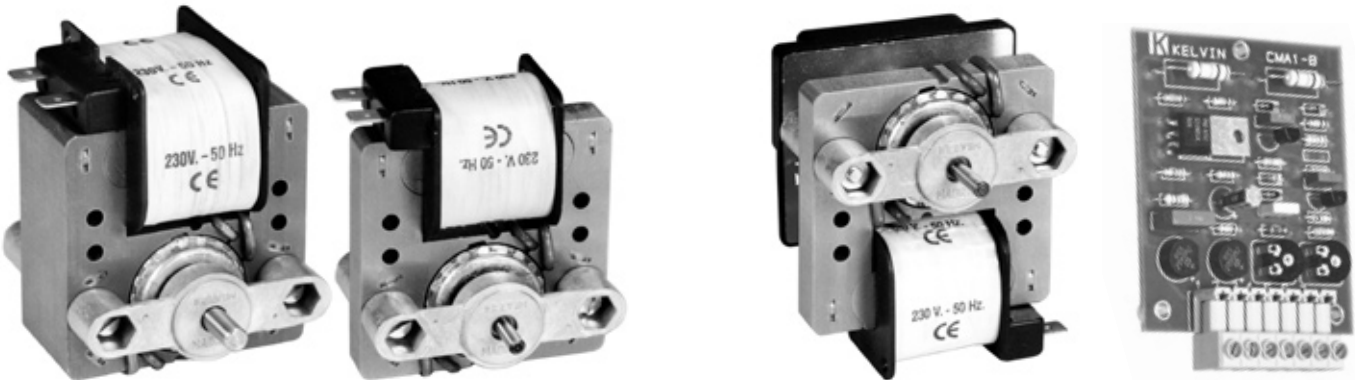




CE



■ STANDARD execution motor.

■ Motor with encoder COE 502.

■ Control card VV.

TECHNICAL CHARACTERISTICS

Single-phase asynchronous motors instantaneous start by means of shaded poles. Not RF interferences.

High starting torque. Runs silently in whatever position.

- **Construction.** Single piece magnetic stator plate.
Squirrel-cage rotor made of die-cast aluminium.
Bearing brackets of die-cast zamak.
The rotor turns on sintered-bronze bearing, self-lubricating with a large **oil reserve for continuous service S1** higher than 10,000 hours at 30°C.
- **Hardened steel shaft**, at 4 or Ø6 mm. (depending on versions).
- **Protection**, IP 00 (CEI 529).
- **Insulating**, H CEI 85 (EN 60204-1) in self extinguishing plastic reel VO class.
- **Voltage test**. EN 60204-1.
- **Operating voltage**: 230 V. 50 Hz. (For others, ask for information).
- **Connection** by Faston 6.35 terminal.
- **Operating** in room temperatures within -10 and 50°C with overheating $\Delta T \leq 70^\circ\text{C}$.
- **Five stack versions with thicknesses** 11 - 16 - 20 - 30 and 40 mm.
- **OPTIONAL.**
 - Winding for increased torque **R** or twice increased torque **BR** to operate with cooling fan, or intermittent operation by specification (thermal protector recommended).
 - Winding for decreased torque **D** for continuous operation in room temperatures up to 70°C.
 - Thermal protector on all types, except G411.
 - Flexible cable connections.
 - Two-directional turning is obtained by two stators mounted in tandem. Exclusively in types **G411 - G416 and G620**.
 - Rotor turning on ball bearings only with Ø6 axle exclusively in types **G620 - G630 - G640**.
 - Shaft lengths greater than standardized, available on request.
 - Electromagnetic or electronic brakes.
 - Electronic speed changer at constant torque **VV** with encoder **COE 502** up to 20:1 ratio.

Your special requests are welcome.

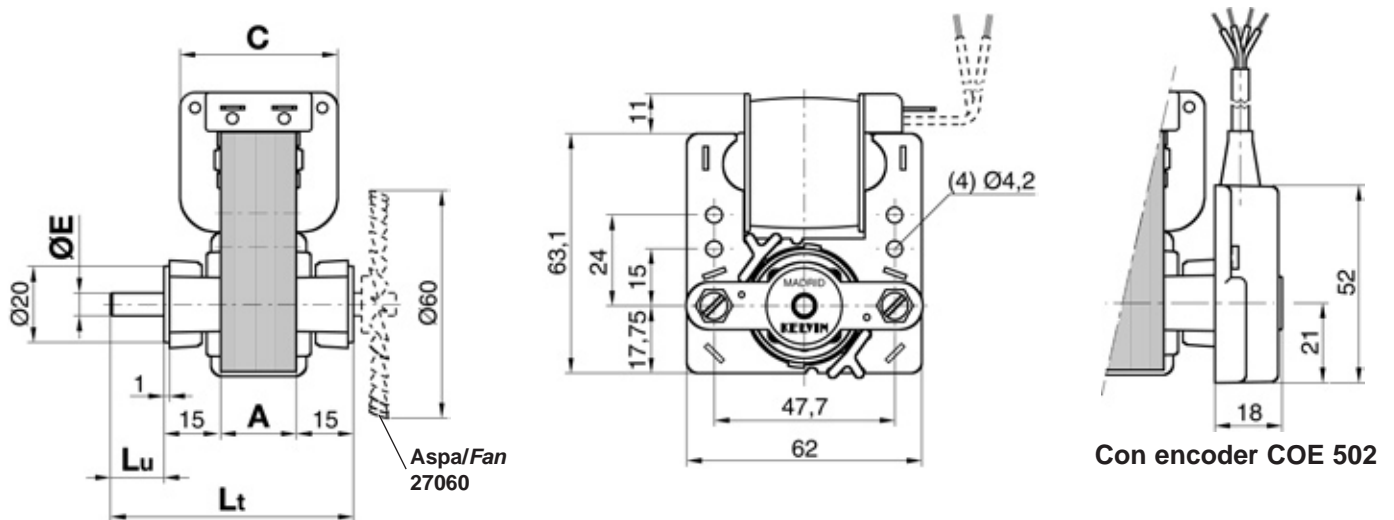
VELOCIDAD Y PAR A 50 Hz. ARROLLAMIENTOS NORMALIZADOS Y ESPECIALES.
SPEED AND TORQUE AT 50 Hz. STANDARD AND SPECIAL WINDINGS.

MOTOR Type Tipo	VELOCIDAD EN VACIO NO LOAD SPEED -2% r.p.m.	PAR DE ARRANQUE STARTING TORQUE				POTENCIA EN VACIO NO LOAD INPUT POWER								SOBRECALENTAMIENTO OVERHEATING • T °C				
		Nm ±2%				V.A.				W.				Sin ventilador Without FAN		Con aspa/With fan 27060		
		D	N	R	BR	D	N	R	BR	D	N	R	BR	D	N	N	R	BR
G.411	2.650	0,006	0,008	0,011		18	31			8	12			35	63	35		
G.416	2.800	0,010	0,014	0,019		28	42	98		13	17	29		45	70	35	55	
G.620	2.700	0,013	0,018	0,026	0,031	28	42	74	114	14	21	33	41	40	65	25	35	60
G.630	2.750	0,015	0,021	0,035	0,048	35	50	91	142	16	25	41	51	50	65	25	35	60
G.640	2.850	0,020	0,028	0,045	0,064	42	55	105	155	29	45	49	68	50	65	25	35	65

N= Ejecución normal. D= De par debilitado. R y BR= De par reforzado.

N= Normal execution. D= Decreased torque. R and BR= Increased torque.

DIMENSIONES - DIMENSIONS



MOTOR	A mm	C mm	ØE mm	Lu mm	Lt mm	Peso/Weight kg
G.411	11	31	4	14	55	0,440
G.416	16	36,6	4	12	58	0,620
G.620	20	40,7	6	15	65	0,820
G.630	30	50,7	6	16	76	1,000
G.640	40	60,7	6	15	85	1,360

Las dimensiones del eje pueden variar bajo pedido.

Shaft dimensions could be changed on request.

Los motores serie G se pueden montar en los reductores de velocidad Series...

The G series motors can be attached on gearbox Series...

...K15-K31-K50-K80

MONTAJE DE LOS MOTORES serie G

Situar el motor separado a más de 20 mm. de materiales magnéticos, hierro, acero, etc.
No emplear separadores ni tornillos de hierro o acero, ya que al CORTOCIRCUITAR el circuito magnético, el PAR DISMINUYE NOTABLEMENTE.
Esta separación mínima, debe respetarse para los cuatro lados del motor.

G series MOTORS LOCATION

VERY IMPORTANT ADVICE:
Locate the unit at least 20 mm. away from magnetic materials, around the four sides of it.
Never use spacers or screws made of iron or steel, because the TORQUE FALLS NOTICEABLY when shunting the magnetic field.